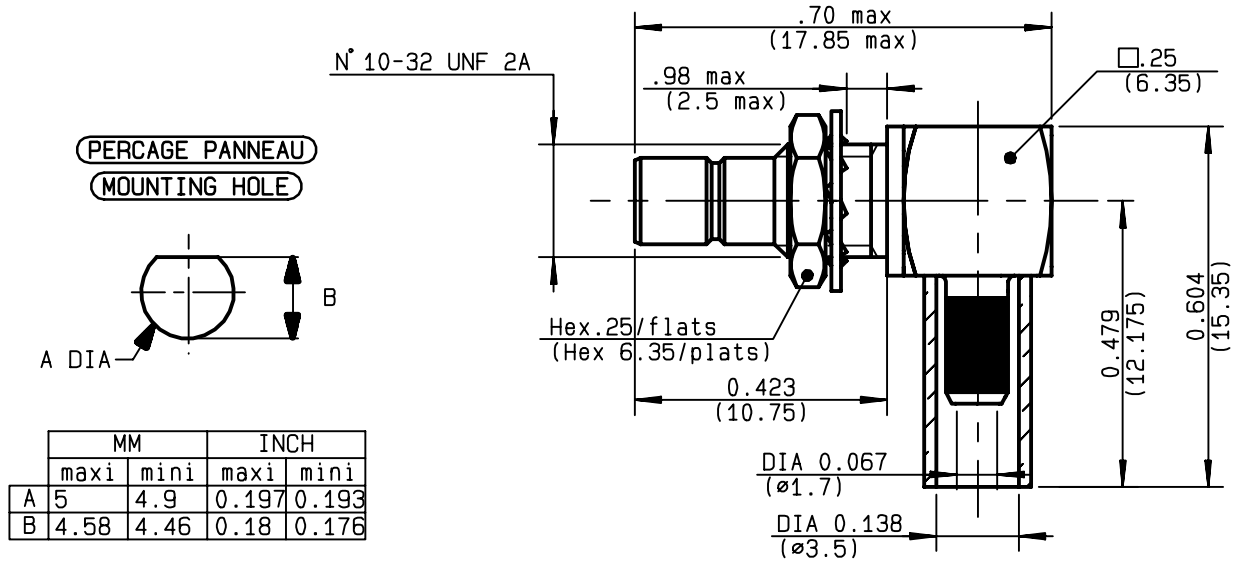


**RIGHT BULKHEAD JACK FRONT MOUNT
CRIMP TYPE - CABLE 2.6/50 D**

R114.373.120
SERIES SMB



NOMINAL IMPEDANCE	50 Ω
FREQUENCY RANGE	0-4 GHz
TEMPERATURE RATING	-65/+165 °C
V.S.W.R	1.35 + .04 x F(GHz)Maxi
RF INSERTION LOSS	0.5 √F(GHz) dB Maxi
VOLTAGE RATING	335 Veff Maxi
DIELECTRIC WITHSTANDING VOLTAGE	1000 Veff Mini
INSULATION RESISTANCE	1000 MΩMini
HERMETIC SEAL	NA Atm.cm ³ /s
LEAKAGE (pressurized only)	NA
MECHANICAL DURABILITY	500 Cycles
WEIGHT	3.2 gr
SPECIFICATION	

CABLES : K02252D
RD 316
OTHERS CHARACTERISTICS
CABLE RETENTION 110 N Mini
CENTER CONTACT RETENTION
Axial force - mating end 10 N Mini
Axial force - opposite end 10 N Mini
Torque NA cm.N Mini
RECOMMENDED TORQUES
Mating NA cm.N
Panel nut 60 cm.N
Clamp nut NA cm.N

CONNECTOR PARTS:	MATERIALS	FINISH	(all values are given) in micrometers
BODY	BRASS	NICKEL 2	
OUTER CONTACT			
CENTER CONTACT	BRASS	GOLD 1.3 OVER NICKEL 2	
INSULATOR	PTFE	-	
GASKET		-	
OTHERS PIECES	BRASS	NICKEL 2	

ISSUE 9850A00	CREATION DATE 16/12/1996	FILE PART-NUMBER 93-0105-001
-------------------------	------------------------------------	--



ANNEQUIN

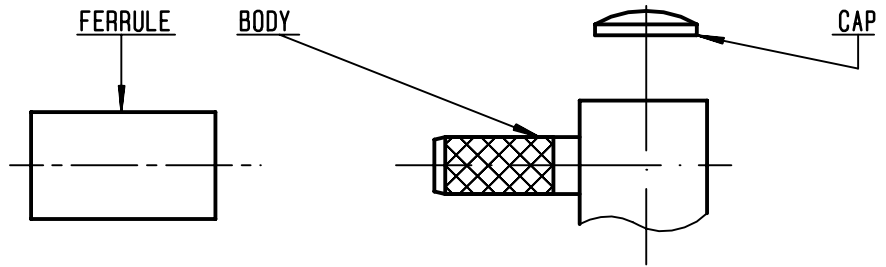
The information given here is subject to change without notice.
Design changes may be in order to improve the product .

Connect to the future



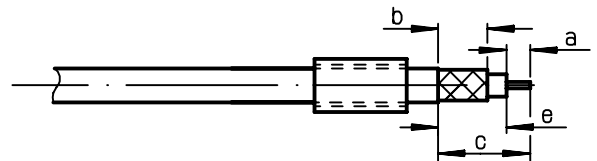
R114.373.120

ISSUE **9850A00** SERIES **SMB**



①

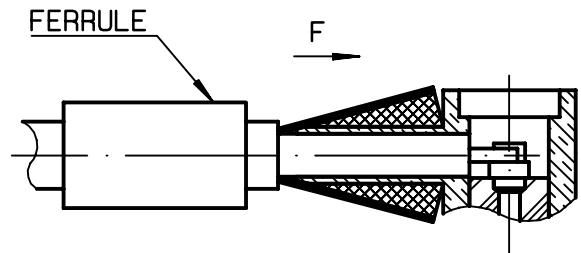
Slide ferrule onto cable .
Strip the cable .
-
-



Stripping	a	b	c	d	e
inch	0.059	0.213	0.378	0	0.319
mm	1.5	5.4	9.6		8.1

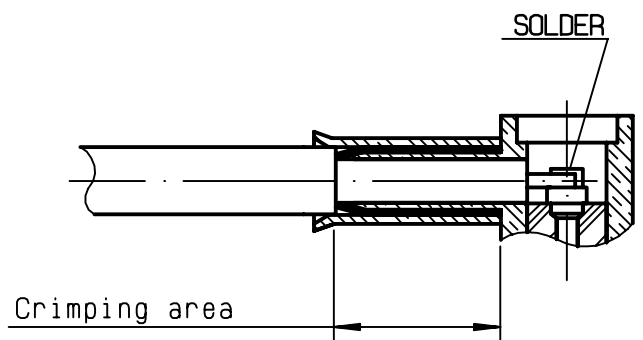
②

Fan the braid .
Push connector body under the braid .
Slide ferrule over braid
(in direction F)
-
-



③

Crimp the ferrule with crimping tool R282.271.000 (Hex. : .151 (3.84)) or crimping tool R282.293.000 (M22520/5-01) + dies R282.235.037 (M22520/5-37) Solder inner conductor .



④

Place the cap into body.
Press cap flush or slightly below surface of body assembly .
-
-
-
-
-

